

Linkpro 2025

Medical Equipment Interfacing services:

- Uni-Directional - One to One
- Bi-Directional - One to Many

Smooth, Secure and Scalable

Solutions from PROTECH

Call now for a FREE Technical advice on:

+91-98-102-31233

On Linkpro platform we also provide:

- Support for complete interfacing and LIMS
- Delivery support for web enabled telemedicine scenario
- Secure & encryption plug-in services
- Integration with existing HMS or LIMS
- Remote Systems Management

Linkpro 2025 is a machine specific solution and also builds a bridge between equipment and the central database. It's integration with any industry specific LIMS depends on the efficacy of following components of LIMS:

- ✓ System of Registration
- ✓ System of Lab Bookings
- ✓ System of test selection & Billing with receipts
- ✓ System of sample collection
- ✓ System regarding sample transfer to various departments main lab
- ✓ Scheduling at various departments
- ✓ Result posting to peripheral labs
- ✓ Reports and their Pending status

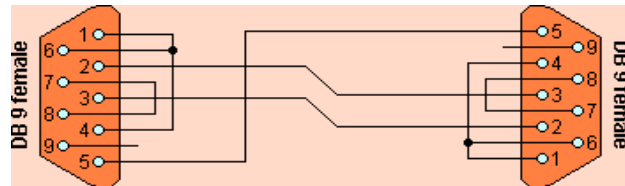
Linkpro 2025: Interfacing application product/solution

- ➔ Fast to deploy
- ✓ Easy to maintain application front end
- ✗ Fully configurable product/solution
- 🌊 Simple to use



Using Linkpro-Gateway, Linkpro 2025 is capable of delivering:

- ✓ Accurate results
- ✓ Error free data entry
- ✓ Faster work processes in an automated Lab environment
- ✓ Operator independent work processes
- ✓ NABL compliant data verification edge
- ✓ Bar Codes & Sample handling in a secure manner
- ✓ Reduces mixing up of patient test results
- ✓ Future enabled LIMS applications
- ✓ Cost benefits
- ✓ Demonstrably improved analytical quality & job satisfaction.



For private circulation only

Linkpro Bulletin

Vol-2 Issue-4

14th April, 2008

Linkpro 2025 Futura

- Multi modal data broadcasting processing
- Interfacing unit for receiving contents transferred from a data broadcasting server and storing the contents
- Browsing to
 - ✓ Parse
 - ✓ Classify
 - ✓ Interpret classified contents

Linkpro 2025 Add ons

- Controls data and Controls Run
- Quality parameters
- Statistical Graphs for control and patient data
- Machine control through the software
- Terminal Server using Ethernet backbone
- Inventory Control
- With or Without middle ware database



Current News

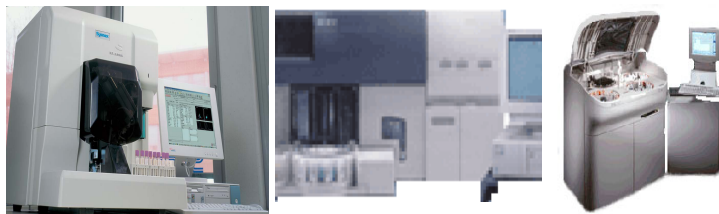
At Protech, we completed bi-directional interfacing for following equipments for another client:

- Beckman's HMX
- Advia
- Sysmex CA-500

with seamless integration with Bar Coding solution. As we were told, this is the first Advia machine which has been linked bi-directional in an Indian Diagnostic setup. Our current work focus on following equipments is still underway;

1. Diagnova Elisa Reader
2. Sysmex Urine Analyzer
3. Sysmex ESR System

Connecting these machines to multi dimensional health care database is a task of incorporating certain proprietary protocols in order to have database connection **live** and **close** at request. Elisa Reader has to be host enabled which requires machine software and that needs to be installed on the equipment itself. Thus such projects do require handling gamuts of varied nature in providing seamless solutions to the client.



Protech Systems Pvt. Ltd.

C-28, Gulmohar Park,
New Delhi - 110049. INDIA

+91-11-26961852, 26566609

+91-98-102-31233

protech@aprotech.com

www.protech.com

Please call for a free technical advice on
Machine Interfacing via Linkpro 2025 Computing environment ▶▶▶▶

(c) 1998-2008 Protech Systems Private Limited, New Delhi. INDIA. No part of this bulletin can be reproduced in any way without the written approval from Protech Systems Private Limited.