



Stroke of mid-night between 14th and 15th August, 1947: When the world slept: India became a Free Nation
Greetings on 60 years of Indian Independence

Linkpro 2025

Medical Equipment Interfacing services:
- Uni-Directional
- Bi-Directional

ATTRACTIVE PRICES AND SCALABLE SOLUTIONS
Special Independence Day Discounts up to 31.08.2007



Automation re-defined in Diagnostic Laboratory

by virtue of building right communication channel between your existing LIMS and the machines you are adding up into your diagnostic portfolio.

Linkpro will have a structured information flow to achieve this objective. It is a fast and cost-effective way of connecting geographically dispersed diagnostics equipments.

Linkpro in conjunction with right Lab Information system provides gateway for an automated diagnostic lab. It comes with full support for uni-directional and bi-directional interfacing solutions.

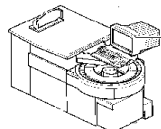
Linkpro interfacing services are amazingly **fast** and with accurate delivery capacities. The solution would provide **Real time** data notifications and dispatch-ready reports.

Using Linkpro-Gateway, Linkpro 2025 is capable of delivering:

- Accurate results
- Error free data entry
- Faster work processes in a dynamic & automated Diagnostic Lab environment
- Operator independent work processes
- NABL compliant data verification edge
- Bar Codes & Sample handling in a secure manner
- Reduces any of mixing up of patient test results
- Future enabled LIMS applications
- Cost benefits
- Demonstrably improved analytical quality
- Better analyst job satisfaction.

On Linkpro platform we also provide:

- 🖨️ Support for complete interfacing and LIMS
- 🌐 Delivery support for web enabled telemedicine scenario
- 🔒 Secure & encryption plug-in services
- 🔗 Integration with existing HMS or LIMS



Protech Systems Pvt. Ltd.

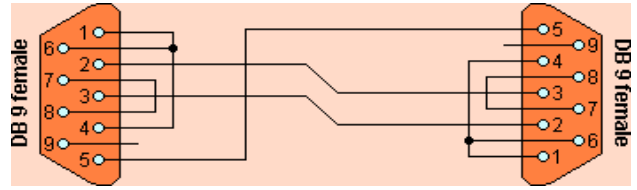
C-28, Gulmohar Park,
New Delhi - 110049. INDIA

+91-11-26961852, 26566609

+91-98-102-31233

protech@aprotech.com

www.protech.com



For private circulation only
Vol-1 Issue-8

Linkpro Bulletin

14th August, 2007



Current News

Month of August, 2007 is becoming a time to define new dimensions in equipment interfacing paradigm. This month, we have already completed Diagnostic Lab interfacing solutions for following machines for two different clients:

1. Roche's Cobas Integra
2. Bayer's ACS 1800SE
3. Roche's Hitachi 902
4. Coulter A^C-T 5diff

We are excited to undertake new assignments covering following machines in fully automated scenario which we hope to complete this by month end:

1. Dade Behring's Dimensions Analyzer
2. Abbott's Cell-Dyn 3200 System
3. Abbott's Exim System

Right technology framework is very important for interfacing solution to build seamless data communication channel with existing Lab information domain. But it is equally important to look for a right LIMS solution which should have appropriate database structure to support automated processes like bar code generation at the time of accessioning to pushing the data back to central database. Machines were connected to the back end database on Oracle and SQL Server. One of the machines was connected with Jet database engine making our solution scalable on any standard databases.

Linkpro 2025: Interfacing application product/solution

- ➔ Fast to deploy
- ✓ Easy to maintain application front end
- 🔧 Fully configurable product/solution
- 🌊 Simple to use

Please call for a free technical advice on
Machine Interfacing via Linkpro 2025 Computing environment ▶▶▶▶

(c) 2007 Protech Systems Private Limited, New Delhi, INDIA. No part of this bulletin can be reproduced in any way without the written approval from Protech Systems Private Limited.