

Linkpro 2025

Medical Equipment Interfacing services:
- Uni-Directional
- Bi-Directional

Special Offer till 31st December, 2007






25% Discount on all our solutions!

FREE IT consultancy on Interfacing Services*

*(Conditions Apply)

Contact Now at 98-102-31233

On **Linkpro** platform we also provide:

-  Support for complete interfacing and LIMS
-  Delivery support for web enabled telemedicine scenario
-  Secure & encryption plug-in services
-  Integration with existing HMS or LIMS
-  Remote Systems Management

It is important to get hold of a right LIMS solution which should have appropriate back end database to support automated processes like bar code generation at the time of accessioning to pushing the data back to central database.



Automation re-defined in Diagnostic Laboratory

by virtue of building right communication channel between your existing LIMS and the machines you are adding up into your diagnostic portfolio.

Linkpro will have a structured information flow to achieve this objective. It is a fast and cost-effective way of connecting geographically dispersed diagnostics equipments.

Linkpro in conjunction with right Lab Information system provides gateway for an automated diagnostic lab. It comes with full support for uni-directional an bi-directional interfacing solutions.

Linkpro interfacing services are amazingly **fast** and with accurate delivery capacities. The solution would provide **Real time** data notifications and dispatch-ready reports.

Linkpro 2025: Interfacing application product/solution

- ➔ Fast to deploy
- ✓ Easy to maintain application front end
- ✗ Fully configurable product/solution
- ⚡ Simple to use



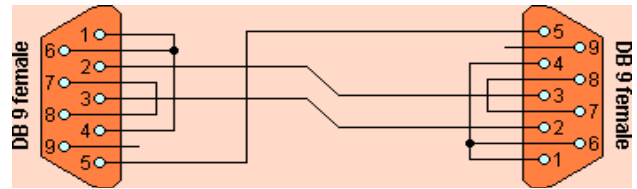
Using Linkpro-Gateway, **Linkpro 2025** is capable of delivering:

- ✓ Accurate results
- ✓ Error free data entry
- ✓ Faster work processes in an automated Lab environment
- ✓ Operator independent work processes
- ✓ NABL compliant data verification edge
- ✓ Bar Codes & Sample handling in a secure manner
- ✓ Reduces mixing up of patient test results
- ✓ Future enabled LIMS applications
- ✓ Cost benefits
- ✓ Demonstrably improved analytical quality & job satisfaction.



Please call for a free technical advice on
Machine Interfacing via Linkpro 2025 Computing environment ▶▶▶▶

(c) 2007 Protech Systems Private Limited, New Delhi. INDIA. No part of this bulletin can be reproduced in any way without the written approval from Protech Systems Private Limited.



For private circulation only
Vol-1 Issue-12

Linkpro Bulletin
14th December, 2007

Interfacing Concepts

An Interfacing solution would enable communication between computer systems and other analytical diagnostic systems. Interfaces not only allow a person to use the machine, they also permit one machine to communicate with another, even one running on an entirely different operating system.

Unidirectional

Linkpro Unidirectional interface transfers laboratory results back to the ordering facility. It may be used if laboratory staff does not have time to accession and track all reference laboratory data. It passes laboratory data from the Reference Laboratory to the database, if it meets all criteria of patient and test identification along with test mapping between machine and the database's standard test definitions. Laboratory data transmitted to database via the interface is designed as a replacement for patient report data entry and provides an abstracted view of laboratory results suitable for health summary display, database searches, and clinical overview.

Bidirectional

Linkpro Bidirectional interface transmits orders electronically as well as receive results. Test orders placed in the Laboratory System (LIMS or LMIS) or Electronic Health Record (EHR) are exported to the designated Laboratory when accessioned. Test results are released by the Laboratory and may be reviewed and verified using the Enter/Verify Data options available in the interfacing interactive GUI of the Laboratory Package. If a laboratory uses a bidirectional interface, the data stored in the laboratory files duplicates the data sent by the Laboratory and is available in all normal laboratory report options as well as from database and the Electronic Health Record (EHR).



Current News

Presently, following machine interfacing solutions are underway:

1. **Advia 120 Hematology System**
2. **BIO-RAD BioPlex 2200 System**

Both these solutions are on Bidirectional mode with seamless integration with Bar Coding solution.



Protech Systems Pvt. Ltd.

C-28, Gulmohar Park,
New Delhi - 110049. INDIA

+91-11-26961852, 26566609
+91-98-102-31233

protech@aprotech.com
www.protech.com

