

Linkpro 2025

Medical Equipment Interfacing services:
- Uni-Directional
- Bi-Directional

Smooth, Secure and Scalable

Solutions from PROTECH

Call now for a FREE Technical advice on:

+91-98-102-31233

On Linkpro platform we also provide:

- Support for complete interfacing and LIMS
- Delivery support for web enabled telemedicine scenario
- Secure & encryption plug-in services
- Integration with existing HMS or LIMS
- Remote Systems Management

It is important to get hold of a right LIMS solution which should have appropriate back end database to support automated processes like bar code generation at the time of accessioning to pushing the data back to central database.



Automation re-defined in Diagnostic Laboratory

by virtue of building right communication channel between your existing LIMS and the machines you are adding up into your diagnostic portfolio.

Linkpro will have a structured information flow to achieve this objective. It is a fast and cost-effective way of connecting geographically dispersed diagnostics equipments.

Linkpro in conjunction with right Lab Information system provides gateway for an automated diagnostic lab. It comes with full support for uni-directional an bi-directional interfacing solutions.

Linkpro interfacing services are amazingly fast and with accurate delivery capacities. The solution would provide Real time data notifications and dispatch-ready reports.

Linkpro 2025: Interfacing application product/solution

- Fast to deploy
- Easy to maintain application front end
- Fully configurable product/solution
- Simple to use



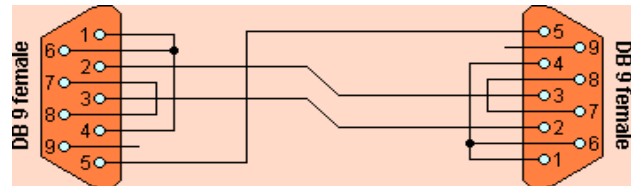
Using Linkpro-Gateway, Linkpro 2025 is capable of delivering:

- Accurate results
- Error free data entry
- Faster work processes in an automated Lab environment
- Operator independent work processes
- NABL compliant data verification edge
- Bar Codes & Sample handling in a secure manner
- Reduces mixing up of patient test results
- Future enabled LIMS applications
- Cost benefits
- Demonstrably improved analytical quality & job satisfaction.



Please call for a free technical advice on
Machine Interfacing via Linkpro 2025 Computing environment

(c) 2007 Protech Systems Private Limited, New Delhi, INDIA. No part of this bulletin can be reproduced in any way without the written approval from Protech Systems Private Limited.



For private circulation only

Linkpro Bulletin

Vol-2 Issue-1

14th January, 2008

Linkpro 2025 Futura

- Multi modal data broadcasting processing
- Interfacing unit for receiving contents transferred from a data broadcasting server and storing the contents
- Browsing to
 - Parse
 - Classify
 - Interpret classified contents

Linkpro 2025 Add ons

- Controls data and Controls Run
- Quality parameters
- Statistical Graphs for control and patient data
- Machine control through the software
- Terminal Server using Ethernet backbone
- Inventory Control
- With or Without middle ware database



Current News

With Cache', premium Healthcare database , we integrated seamlessly following equipment in bi-directional mode:

Beckman's LH-500 Coulter

On Protech's standard LIMS (LMIS as brand name), we completed the effective data pipe with

Advia 120 Hematology System

BIO-RAD BioPlex 2200 System

Both these solutions were on Bidirectional mode having seamless integration with Bar Coding solution.

As the time of implementation is reducing, we are devoting more valuable time on research and this entire paradigm is becoming profitable for the client as well for us, too.

Our strategy is to look for a client centric solution for all machines. This is achieved through intelligent and stable logic handlers.



Protech Systems Pvt. Ltd.

C-28, Gulmohar Park,
New Delhi - 110049, INDIA

+91-11-26961852, 26566609

+91-98-102-31233

protech@aprotech.com

www.protech.com

