

Linkpro 2025

Medical Equipment Interfacing services:

- Uni-Directional - One to One
- Bi-Directional - One to Many

Smooth, Secure and Scalable Solutions
from

PROTECH

Call now for a FREE Technical advice on: +91-98-102-31233

On Linkpro platform we also provide:

- Support for complete interfacing and LIMS
- Delivery support for web enabled telemedicine scenario
- Secure & encryption plug-in services
- Integration with existing HMS or LIMS
- Remote Systems Management

Linkpro 2025 is a machine specific solution and also builds a bridge between equipment and the central database. It's integration with any industry specific LIMS depends on the efficacy of following components of LIMS:

- ✓ System of Registration
- ✓ System of Lab Bookings
- ✓ System of test selection & Billing with receipts
- ✓ System of sample collection
- ✓ System regarding sample transfer to various departments main lab
- ✓ Scheduling at various departments
- ✓ Result posting to peripheral labs
- ✓ Reports and their Pending status

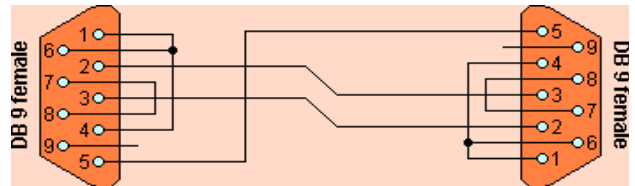
Linkpro 2025: Interfacing application product/solution

- ➔ Fast to deploy
- ✓ Easy to maintain application front end
- ✗ Fully configurable product/solution
- 🌊 Simple to use



Using Linkpro-Gateway, Linkpro 2025 is capable of delivering:

- ✓ Accurate results
- ✓ Error free data entry
- ✓ Faster work processes in an automated Lab environment
- ✓ Operator independent work processes
- ✓ NABL compliant data verification edge
- ✓ Bar Codes & Sample handling in a secure manner
- ✓ Reduces mixing up of patient test results
- ✓ Future enabled LIMS applications
- ✓ Cost benefits
- ✓ Demonstrably improved analytical quality & job satisfaction.



For private circulation only
Vol-2 Issue-6

Linkpro Bulletin

14th June, 2008

Linkpro 2025 Futura

- Multi modal data broadcasting processing
- Interfacing unit for receiving contents transferred from a data broadcasting server and storing the contents
- Browsing to
 - ✓ Parse
 - ✓ Classify
 - ✓ Interpret classified contents

Linkpro 2025 Add ons

- Controls data and Controls Run
- Quality parameters
- Statistical Graphs for control and patient data
- Machine control through the software
- Terminal Server using Ethernet backbone
- Inventory Control
- With or Without middle ware database



Current News

For a government establishment, following two machines were completed this month :

1. Beckman's CX5
2. Beckman's CX9

with seamless integration with Bar Coding solution.

Connecting CX5 and CX 9 machines is though an easier context as we had already completed this task for many clients. But for a new client in an absolute newer environment has become unique as there is no LIS backbone. And the client is not keen on investment to have a completely new LIS infrastructure. Thus a seamless reporting tool is also planned for these two machines. This will enhance interfacing solution's efficacy and will work as stand alone registration, reporting and interfacing tool.

Our current work focus on following equipments is still underway;

1. Hitachi-917 (uni-di)
2. Beckman's CX9 (bi-di) for another client

Though both these machines had been completed for various other clients but uniqueness in CX9 would be connecting to MySQL Database Server



Protech Systems Pvt. Ltd.

C-28, Gulmohar Park,
New Delhi - 110049. INDIA

+91-11-26961852, 26566609

+91-98-102-31233

protech@protech.com

www.protech.com



An ISO 9001:2000 Certified Company

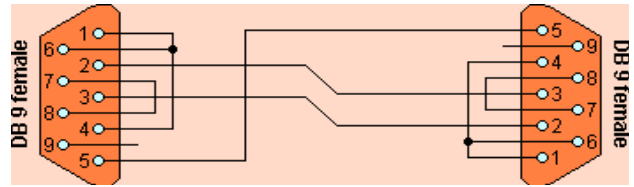
Please call for a free technical advice on ▶▶▶▶▶
Machine Interfacing via Linkpro 2025 Computing environment

(c) 1998-2008 Protech Systems Private Limited, New Delhi. INDIA. No part of this bulletin can be reproduced in any way without the written approval from Protech Systems Private Limited.

Linkpro 2025

Medical Equipment Interfacing services:

- Uni-Directional - One to One
- Bi-Directional - One to Many



Frequently Asked Questions

1. How many types of Bi-Directional protocols are available in Linkpro 2025^{Bi} for different machines?

Linkpro 2025^{Bi} is catering to two fundamental sending test work order to machines:

- Uploading** the entire set of test work order and whenever the sample is in place in the machine, the bar code is read by the machine and from its own database, it checks the test list for that sample.
- Query** mode in which every time the machine reads the bar code, it sends the query to the **Linkpro 2025^{Bi}**.

2. Does Linkpro 2025^{Uni} and Linkpro 2025^{Bi} interface provide capability to interface the machines to LIMS of other vendors?

Yes! In fact this is the beauty of **Linkpro 2025^{Uni} and Linkpro 2025^{Bi}**. Extraordinarily these solutions can connect to any LIMS with structured or unstructured databases. Though we provide consultancy too on this subject but mostly, the solution can be made available without much effort.

3. Should IT people also attend the training?

Almost all of the setup and maintenance of the reference laboratory interface will be performed by laboratory personnel. Tasks are performed primarily by laboratory technicians familiar with the LIMS. If an IT person is keen, just an hour or so of training is sufficient for them to become tuned with the system.

4. When setting up tests in masters, is it necessary to have entries in Site/Specimen and Collection Sample fields for the bidirectional interface?

Those fields are required for tests that are type "both." Tests that are "output" only, because they are members of a panel, need a site/specimen but do not need a collection sample, as the collection sample will be chosen when the parent test is ordered. Type "input" tests do need collections samples defined.

5. Is it important to do entry for every test in the Accession area?

For bidirectional interface **Linkpro 2025^{Bi}**, entry for all the tests are important to have a traceable sample flow architecture. But for unidirectional interface **Linkpro 2025^{Uni}** as the tests are directly input to the machine, thus it may not be essential.

10. Is it important to have each test a data name? In case of Glucose, it may be reported in three formats: Glucose(Fasting), Glucose(PP), Glucose(R), thus is it necessary to have a unique Glucose data name for every type of Glucose?

Yes! And it is handled very effectively in both uni and bi-directional cases. There can be different philosophies to handle such a case and both **Linkpro 2025^{Uni} and Linkpro 2025^{Bi}** handles through sample identification with a suffix predefined.



Protech Systems Pvt. Ltd.

C-28, Gulmohar Park,
New Delhi - 110049. INDIA

+91-11-26961852, 26566609

+91-98-102-31233

protech@aprotech.com

www.protech.com

An ISO 9001:2000 Certified Company

Please call for a free technical advice on
Machine Interfacing via Linkpro 2025 Computing environment

(c) 1998-2008 Protech Systems Private Limited, New Delhi. INDIA. No part of this bulletin can be reproduced in any way without the written approval from Protech Systems Private Limited.