

Linkpro 2025

Medical Equipment Interfacing services:
- Uni-Directional
- Bi-Directional

ATTRACTIVE PRICES AND SCALABLE SOLUTIONS

On **Linkpro** platform we also provide:

- Support for complete interfacing and LIMS
- Delivery support for web enabled telemedicine scenario
- Secure & encryption plug-in services
- Integration with existing HMS or LIMS
- Remote Systems Management

It is important to get hold of a right LIMS solution which should have appropriate back end database to support automated processes like bar code generation at the time of accessioning to pushing the data back to central database.

Automation re-defined in Diagnostic Laboratory

by virtue of building right communication channel between your existing LIMS and the machines you are adding up into your diagnostic portfolio.

Linkpro will have a structured information flow to achieve this objective. It is a fast and cost-effective way of connecting geographically dispersed diagnostics equipments.

Linkpro in conjunction with right Lab Information system provides gateway for an automated diagnostic lab. It comes with full support for uni-directional and bi-directional interfacing solutions.

Linkpro interfacing services are amazingly **fast** and with accurate delivery capacities. The solution would provide **Real time** data notifications and dispatch-ready reports.



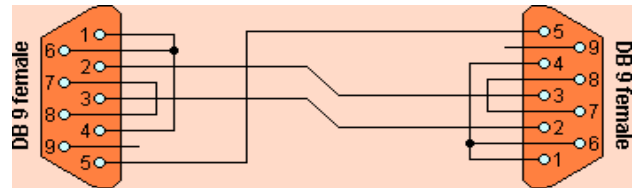
Current News

October 2007 and first part of November 2007 was devoted to new development platform. Uniqueness in our solution is our asset thus upcoming developments would handle some unique but simple features like remote management and online application upgradation.

This month, we completed Diagnostic Lab interfacing solutions for following series of machines for our international client whose needs were highly structured which helped us in formulating solution in a much more professional manner:

Olympus AU Series (AU5400, AU2700, AU 600, AU400, AU640): The communication with instrument was developed to support both Unidirectional and Bidirectional protocol (in Query Mode) as the laboratory was keen to use it on bidirectional mode during day shift only and they decided to use it on Unidirectional mode during night shift.

Linkpro added another unique feature to provide the user with a choice to choose Unidirectional or Bidirectional mode in runtime. Communication with LIS Host was tested in a real time scenario and the output was generated for following databases: Oracle 10g and SQL Server 2000 at client's location. We further enhanced the solution to port onto SQL Server 2005 database



For private circulation only
Vol-1 Issue-11

Linkpro Bulletin
14th November, 2007



Using Linkpro-Gateway, **Linkpro 2025** is capable of delivering:

- ✓ Accurate results
- ✓ Error free data entry
- ✓ Faster work processes in a dynamic & automated Diagnostic Lab environment
- ✓ Operator independent work processes
- ✓ NABL compliant data verification edge
- ✓ Bar Codes & Sample handling in a secure manner
- ✓ Reduces any of mixing up of patient test results
- ✓ Future enabled LIMS applications
- ✓ Cost benefits
- ✓ Demonstrably improved analytical quality
- ✓ Better analyst job satisfaction.

Linkpro 2025: Interfacing application product/solution

- ➔ Fast to deploy
- ✓ Easy to maintain application front end
- ✗ Fully configurable product/solution
- ⚡ Simple to use



Protech Systems Pvt. Ltd.

C-28, Gulmohar Park,
New Delhi - 110049. INDIA

+91-11-26961852, 26566609

+91-98-102-31233

protech@protech.com

www.protech.com

Please call for a free technical advice on
Machine Interfacing via Linkpro 2025 Computing environment ▶▶▶▶

(c) 2007 Protech Systems Private Limited, New Delhi. INDIA. No part of this bulletin can be reproduced in any way without the written approval from Protech Systems Private Limited.