

# Linkpro 2025

Medical Equipment Interfacing services:

- Uni-Directional
- Bi-Directional

**ATTRACTIVE PRICES AND SCALABLE SOLUTIONS**



## Automation re-defined in Diagnostic Laboratory

by virtue of building right communication channel between your existing LIMS and the machines you are adding up into your diagnostic portfolio.

**Linkpro** will have a structured information flow to achieve this objective. It is a fast and cost-effective way of connecting geographically dispersed diagnostics equipments.

**Linkpro** in conjunction with right Lab Information system provides gateway for an automated diagnostic lab. It comes with full support for uni-directional and bi-directional interfacing solutions.

**Linkpro** interfacing services are amazingly **fast** and with accurate delivery capacities. The solution would provide **Real time** data notifications and dispatch-ready reports.

**v/s.**

### Unidirectional vs. Bidirectional

It is an analytical decision for an IT department in a healthcare scenario to install interface in unidirectional or bidirectional mode.

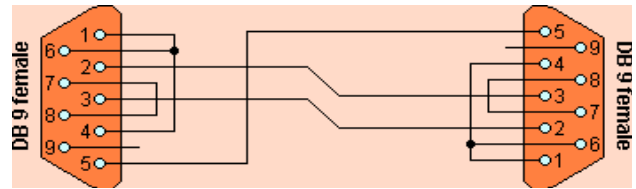
Unidirectional interface requires less time for initial set up as well as maintenance over time. It is important to note that if the unidirectional interface option is chosen, reference ranges and units are passed from the laboratory via the interface and stored with the patient results in database, but are not available to providers when they are trying to view Laboratory results via EHR.

If the interface is in bidirectional mode, laboratory must maintain reference ranges and units consistent with those transmitted by the Laboratory Test master database.

On **Linkpro** platform we also provide:

- Support for complete interfacing and LIMS
- Delivery support for web enabled telemedicine scenario
- Secure & encryption plug-in services
- Integration with existing HMS or LIMS
- Remote Systems Management

It is important to get hold of a right LIMS solution which should have appropriate back end database to support automated processes like bar code generation at the time of accessioning to pushing the data back to central database.



For private circulation only  
Vol-1 Issue-10

**Linkpro Bulletin**

14<sup>th</sup> October, 2007



### Current News

September 2007 became our landmark month for Linkpro application as we formalized the entire Linkpro paradigm on a new platform and we hope to release it by mid-December, 2007. It would contain newer looks and feel of our scalable product. We will add many features to make a truly communication plug-in. Since it is being converted into .NET platform with an object oriented approach, the new equipment interfacing paradigm will change industry benchmarks. This month, we have already completed Diagnostic Lab interfacing solutions for following machines for another client:

1. Beckman Synchron CX4
2. Beckman Synchron CX5

Experience with these instruments was fantastic as we found the communication to be seamless from the very first test run itself. User wanted only on Unidirectional mode with some user specific data features as most of the samples were on bar code but many were not bar coded as their HIS was still in the process of maturing bar code plug in. Our experts took little time to complete beta test and put on live shortly. It was a remarkable achievement for client as well as for us, too. Anyhow, the communication with instrument was developed to support Unidirectional with a future prospect for Bidirectional protocol. Communication with LIS Host was tested in a real time scenario and the output was generated for following databases : SQL Server 2000 at client's location.

We further enhanced the solution to port onto Oracle 10g and SQL Server 2005 databases.

### Linkpro 2025: Interfacing application product/solution

- ➔ Fast to deploy
- ✓ Easy to maintain application front end
- ✗ Fully configurable product/solution
- 🌊 Simple to use



Please call for a free technical advice on  
**Machine Interfacing via Linkpro 2025 Computing environment** ▶▶▶▶

*(c) 2007 Protech Systems Private Limited, New Delhi, INDIA. No part of this bulletin can be reproduced in any way without the written approval from Protech Systems Private Limited.*



Protech Systems Pvt. Ltd.

C-28, Gulmohar Park,  
New Delhi - 110049, INDIA

+91-11-26961852, 26566609

+91-98-102-31233

[protech@protech.com](mailto:protech@protech.com)

[www.protech.com](http://www.protech.com)