

**Bhagat Singh (son of India) Centenary Celebration (27.09.2007): Let's remember him!**  
 He wanted World Federation in which nationalities won't exist thus exploitation of man by man would cease to exist.  
 Let his dream come true!

# Linkpro 2025

Medical Equipment  
 Interfacing services:

- Uni-Directional
- Bi-Directional

**Absolutely  
 NEW**

**ATTRACTIVE PRICES AND SCALABLE SOLUTIONS**



### Automation re-defined in Diagnostic Laboratory

by virtue of building right communication channel between your existing LIMS and the machines you are adding up into your diagnostic portfolio.

Linkpro will have a structured information flow to achieve this objective. It is a fast and cost-effective way of connecting geographically dispersed diagnostics equipments.

Linkpro in conjunction with right Lab Information system provides gateway for an automated diagnostic lab. It comes with full support for uni-directional and bi-directional interfacing solutions.

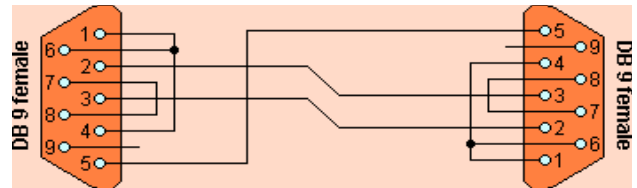
Linkpro interfacing services are amazingly **fast** and with accurate delivery capacities. The solution would provide **Real time** data notifications and dispatch-ready reports.

Using Linkpro-Gateway, Linkpro 2025 is capable of delivering:

- Accurate results
- Error free data entry
- Faster work processes in a dynamic & automated Diagnostic Lab environment
- Operator independent work processes
- NABL compliant data verification edge
- Bar Codes & Sample handling in a secure manner
- Reduces any of mixing up of patient test results
- Future enabled LIMS applications
- Cost benefits
- Demonstrably improved analytical quality
- Better analyst job satisfaction.

On Linkpro platform we also provide:

- Support for complete interfacing and LIMS
- Delivery support for web enabled telemedicine scenario
- Secure & encryption plug-in services
- Integration with existing HMS or LIMS



For private circulation only  
 Vol-1 Issue-9

## Linkpro Bulletin

14<sup>th</sup> September, 2007



### Current News

Month of August, 2007 was a taxing time and the first half of September was devoted fully on new looks and feel of our scalable product Linkpro 2025. The entire solution is being converted into .NET platform with an object oriented approach. The new equipment interfacing paradigm has been introduced in our solution.. This month, we have already completed Diagnostic Lab interfacing solutions for following machines for another client:

1. Clinitek 500 Urine Analyzer
2. Eci by Johnson & Johnson

Eci in a cluster of two machines were installed at the client's place thus our strategic decision was to connect both these machines with the central server in a seamless manner so as to build data on both the machines simultaneously thus reducing operators' verification intervention. It also enabled management to get single spot information delivery. This had been a taxing assignment but in the end we were overwhelmed with the results we could achieve for the client. Remarkable efficacy backed up by accuracy was achieved due to such clustering scenario and resultant automation.

**It is important to get hold of a right LIMS solution which should have appropriate back end database to support automated processes like bar code generation at the time of accessioning to pushing the data back to central database.**

### Linkpro 2025: Interfacing application product/solution

- Fast to deploy
- Easy to maintain application front end
- Fully configurable product/solution
- Simple to use



Protech Systems Pvt. Ltd.

C-28, Gulmohar Park,  
 New Delhi - 110049. INDIA

+91-11-26961852, 26566609  
 +91-98-102-31233

[protech@aprotech.com](mailto:protech@aprotech.com)  
[www.protech.com](http://www.protech.com)

Please call for a free technical advice on  
**Machine Interfacing via Linkpro 2025 Computing environment** ▶▶▶▶

(c) 2007 Protech Systems Private Limited, New Delhi. INDIA. No part of this bulletin can be reproduced in any way without the written approval from Protech Systems Private Limited.