

# proGSM 5010

New Style

- communication tool
- comprehensive alerting service

For *Oscillating Business Processes*

Bigeminal messaging for bigeminal quarries based on *Message Queuing architecture* providing altitudinous message throughput



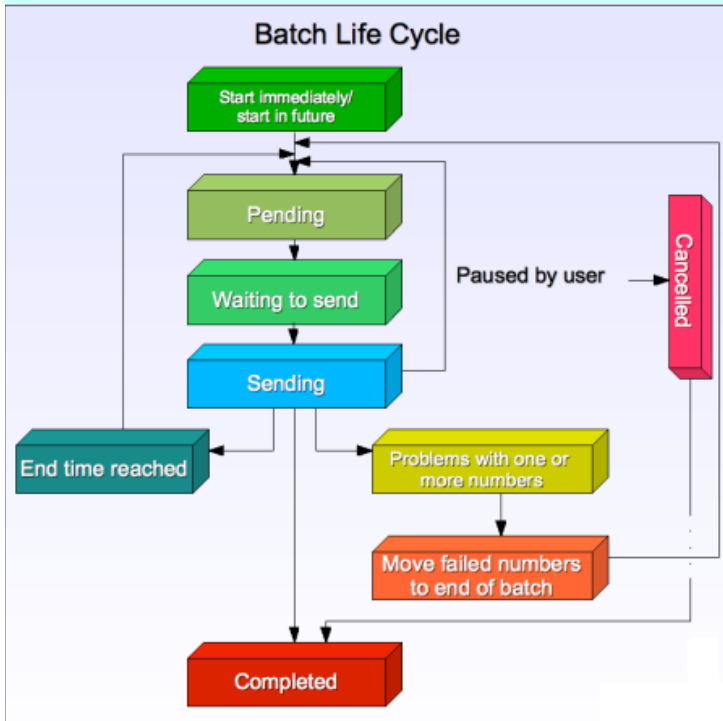
ATTRACTIVE PRICES AND SCALABLE SOLUTIONS

Perfect communication tool for every business

- **proGSM**, a vital tool of communication enables business processes effectively and efficiently
- **proGSM** renders multi platform business activities at the speed of an idea
- **proGSM** boosts subliminal but essential processes

**"Alert yourself in time. Alert your associates in time. Achieve great degree of success in your business. That's what you want!".....proGSM mantra**

proGSM 5100 for Business Enterprises, NGOs, Embassies, Trusts, more.....



## MMS Gateway:

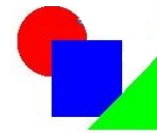
- Protocol Engine to process MM4 protocol conversion
- Message Store and Queue Engine for message delivery
- Message Filtering engine based upon query for connected database
- Mobile Number Directory Engine performing comprehensive number addressing
- Traffic analysis reporting



An ISO 9001:2000 Certified Company

Please call for a free technical advice on Business via SMS / Mobile Computing ▶▶▶▶▶▶

(c) 1998-2008 Protech Systems Private Limited, New Delhi, INDIA. No part of this bulletin can be reproduced in any way without the written approval from Protech Systems Private Limited.



Newer Technologies

## Mobile Sketching

- ✓ Requirements of mobility
- ✓ Sketch-based spatial querying in mobile GIS environments
- ✓ Formulating output
- ✓ Geo-mobile querying

For private circulation only **proGSM Bulletin**

Vol-2 Issue-5

14<sup>th</sup> May, 2008

### Batch Sender Message Life Cycle

illustration on left side describes the assorted attributes, a batch-mode consists in order to monitor its progress.

#### State-Pending

By default every batch is in pending state. A batch is paused if the automatic end time is reached, or if the batch could not complete fully due to failing of some mobile numbers. As an alternative, the user can also pause batch. In this state, a batch can be resumed or canceled.

#### State-Waiting to send

On processing, a batch enters into this state. This may be due to the batch has just been uploaded, or it has had a delayed start time that just passed off. Also it could be resumed by the user. In this state, a batch lists under the Pending Batches screen.

#### State-Sending

Now, SMS are being sent to all the mobile numbers. This is possible only once all numbers have been processed without any failures. From here, the batch will be moved to the Completed state. If there have been some errors, the failed numbers will be moved to the end of the list and the batch will be moved to the Pending state. If a batch reaches its automatic end time it will be paused.

#### State-Completed

This is the final state that a batch enters after it is completed or if the user cancels it. Once in this state, a batch cannot be moved to any other state.

### Other SMS Verticals

- Multiplex Ticketing **Ticket**
- Banking Informatics **Bank**
- Healthcare Paradigm **Healthcare**
- Marketing & Sales Indicators **Market**
- Insurance Tracking **Insure**
- Greetings & Calls **Greetings**
- Customer Relationship **CRM**
- IT enabled Alerts **IT-Alerts**
- Manufacturing ERP **Manufacture**
- Many more applications **proGSM**



**proGSM** is an incredibly fast to deploy and easy to maintain application front end. It acts as mobile plug-in application.



Protech Systems Pvt. Ltd.

C-28, Gulmohar Park,  
New Delhi - 110049. INDIA

+91-11-26961852, 26566609

+91-98-102-31233

[protech@aprotech.com](mailto:protech@aprotech.com)

[www.protech.com](http://www.protech.com)